

# MP50

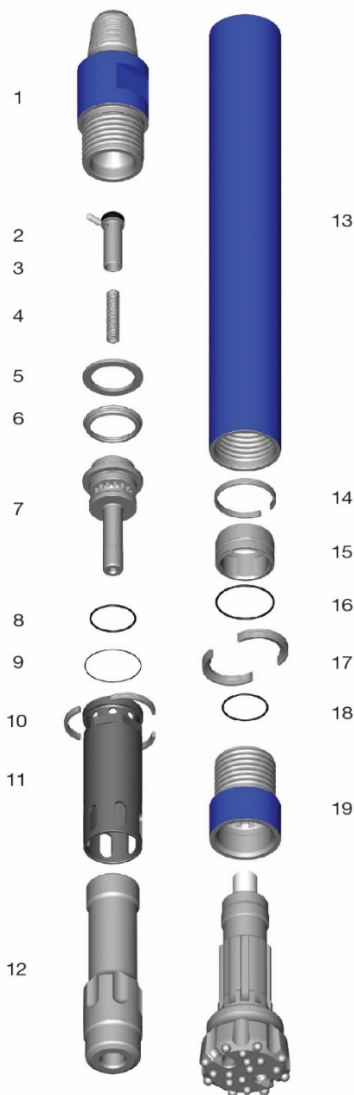


## Parts and Specifications

Copyright © Mincon 2020, All Rights Reserved.



## Mincon MP50 Parts and Specifications



Item	Description	Part Number
	<b>Mincon MP50 (3 1/2" A.P.I. Reg. Pin)</b>	<b>MP501AS01</b>
1	Backhead (3 1/2" A.P.I. Reg. Pin)	MP501BH01
2	Choke Blank	MB506CH01
3	Check Valve	MB502CV01
4	Spring	MB503SP01
5	Steel Make-Up Ring	MP504SM01
6	Lock Ring	MP505LR01
7	Air Distributor	MP507DR01
8	O Ring	MB521OR01
9	O Ring	MB523OR01
10	Seating Ring	MP509SR01
11	Inner Cylinder	MP508IC01
12	Piston	MP510PN01
13	Wear Sleeve	MP511WS01
14	Piston Retaining Ring	MP512PR01
15	Aligner	MP517BB01
16	O Ring	MD621OR01
17	Bit Retaining Ring	MP513BR01
18	O Ring	MB522OR01
19	Chuck (QL50)	MP514CK01
20	Service Kit	MB526SK01
	<b>Service Kit</b>	<b>MB526SK01</b>
2	Choke Blank	MB506CH01
-	Choke 1/8" (3.2mm)	MB506CH02
-	Choke 3/16" (4.8mm)	MB506CH03
4	Spring	MB503SP01
-	O Ring Kit	MB525OK01
	<b>O Ring Kit</b>	<b>MB525OK01</b>
8	O Ring	MB521OR01
9	O Ring	MB523OR01
16	O Ring	MD621OR01
18	O Ring	MB522OR01

### Specification

Specification	Metric
Hammer Outside Diameter	115mm (4.5")
Hammer Length (Less Bit, Backhead Shoulder to Chuck)	1,057mm (41.6")
Backhead Spanner Flat Size	89mm (3.5")
Drill Bit Shank	QL50
Minimum Bit Size	127mm (5")
Hammer Weight (Less Bit)	59.9kg (132 lbs)
Drill Bit Weight (5 1/8"/130mm)	15.9kg (35 lbs)
Piston Weight	13.7kg (30 lbs)
Backhead Stand Off	0.75mm (0.03")
Wear Sleeve Reverse Limit	Non-reversible
Wear Sleeve Discard Limit	106mm (4.17")
Recommended Minimum Air Package	283 L/s @ 17.2 bar (600 cfm @ 250 psi)